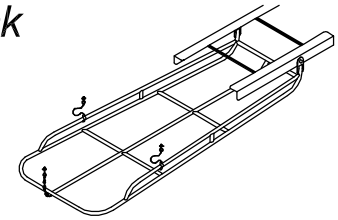


Hauler Rack Interior Ladder Rack Installation for Service Vans



Tools Required:

- Drill
- 1/8" pilot drill bit
- 7/16" drill bit
- 2 small adjustable wrenches
- Tape measure
- Marking pen

Instructions:

1. Locate center of top door frame at rear of van. Choose an area that is toward the front of van on this frame to drill a 7/16" hole. Be sure not to hit any obstructions or outer roof skin when drilling thread insert holes. This is where the rear chain latch will be mounted. Insert a nut sert into this hole. Thread eyebolt into nut sert approximately 1" and draw up jam nut to lock in place. Be sure rear doors close properly and do not hit this eyebolt. (See Fig. 1)
2. From this eyebolt measure forward in van approximately 78". At this point you should be between two ceiling cross braces running from side to side on the van ceiling. Find centers of these two cross braces. Measure out in both directions 6-1/2" on both braces. Drill 4 - 7/16" holes. Insert 4 nut serts in these holes as done in Step 1. Center mounting bracket on these two braces from front to rear and choose a set of 4 bolt holes that match your 4 nut serts. Attach bracket with fasteners provided. Mount pivot end of ladder rack in mounting bracket holes that are approximately 78" from rear eyebolt. Attach pivot end of ladder rack to bracket using 2 - 5/16 bolts and locking nuts provided. Tighten these bolts until snug, but will still turn. (See Fig. 2)
3. Locate ceiling brace that is next one forward from rear door frame. Raise rack upward and latch with rear chain snap. Mark a spot on each side of rack that is 1" out from sides of rack. This is where the two height limiting cables will mount. Drill 7/16" hole and insert nut sert. Screw both height limit cable eyebolts into these nut serts approximately 1" and lock into position with jam nut. Bolt height limit cable lower clamps to ladder rack rails and slide towards front or rear of ladder rack until you find a desired drop height. Do same with the opposite cable, making sure equal tension rests on both cables. Place ladder in rack and check for smooth operation. Be sure rear of rack clears rear doors. Front pivot points can be moved to another set of holes if this is a problem. Rear latch chain may be adjusted at this time to raise ladder rack to maximum height when stowed. (See Fig. 3)

- * Rear van doors may be closed when rack is either stowed (up) or lowered.
- * No maintenance required, either limiting cable may need future adjustment should it become slack.
- * Caution: Do not hang or store foreign objects from rack! weight limit: 50 pounds maximum
- * Patent Pending

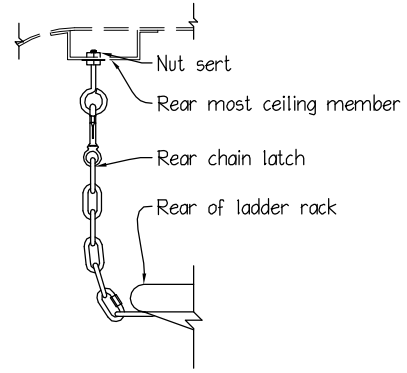


FIG. 1 - Side View

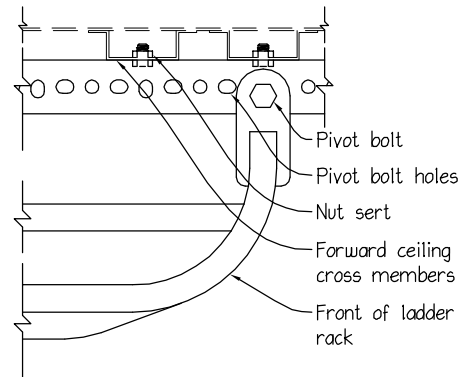


FIG. 2 - Side View

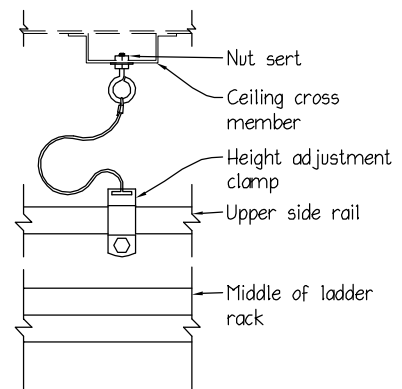


FIG. 3 - Side View

HAULER RACKS, INC.
Minneapolis, MN
800-843-5445